

# Product Information Sheet

COMMISSION DELEGATED REGULATION (EU) 2019/2015 with regard to energy labelling of light sources

**Supplier's name or trade mark:** Carpyen

**Supplier's address:** Dep. Tecnico, Pere IV 78/84, 08005 Barcelona, ES

**Model identifier:** Carpyen-LED024

## Type of light source:

Lighting technology used:	LED	Non-directional or directional:	DLS
Light source cap-type (or other electric interface)	led		
Mains or non-mains:	NMLS	Connected light source (CLS):	Yes
Colour-tuneable light source:	No	Envelope:	-
High luminance light source:	Yes		
Anti-glare shield:	No	Dimmable:	Only with specific dimmers

## Product parameters

Parameter	Value	Parameter	Value
-----------	-------	-----------	-------

### General product parameters:

Energy consumption in on-mode (kWh/1000 h), rounded up to the nearest integer	9	Energy efficiency class	E
Useful luminous flux ( $\phi_{use}$ ), indicating if it refers to the flux in a sphere (360°), in a wide cone (120°) or in a narrow cone (90°)	938 in Wide cone (120°)	Correlated colour temperature, rounded to the nearest 100 K, or the range of correlated colour temperatures, rounded to the nearest 100 K, that can be set	2 700
On-mode power ( $P_{on}$ ), expressed in W	9,0	Standby power ( $P_{sb}$ ), expressed in W and rounded to the second decimal	0,10
Networked standby power ( $P_{net}$ ) for CLS, expressed in W and rounded to the second decimal	0,00	Colour rendering index, rounded to the nearest integer, or the range of CRI-values that can be set	90
Outer dimensions	Height	Spectral power distribution in the	See image in last page
	Width		

without separate control gear, lighting control parts and non-lighting control parts, if any (millimetre)	Depth	2	range 250 nm to 800 nm, at full-load	
Claim of equivalent power <sup>(a)</sup>		-	If yes, equivalent power (W)	-
			Chromaticity coordinates (x and y)	0,450
<b>Parameters for directional light sources:</b>				
Peak luminous intensity (cd)		298	Beam angle in degrees, or the range of beam angles that can be set	120
<b>Parameters for LED and OLED light sources:</b>				
R9 colour rendering index value		65	Survival factor	1,00
the lumen maintenance factor		0,97		

(a) '-': not applicable;

(b) '-': not applicable;

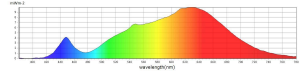
Información

Usuario : Alberto      Tiempo de medición: 09:27:39
No. Medida : MEXSON PREMIUM      Fuente de Luz: Diodos
Nota :

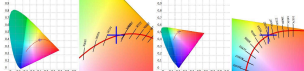
BASIC

CCT : 2841 K
x : 0.0501
y : 0.4325
Luz: 1830 lm
Longitud de onda : 630 nm

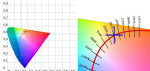
Espectro



CIE1931



CIE1976



Características

Table with 7 columns: CCT, SDCM, CRI, TM30, Ra, etc. containing specific test values.

Información

Centro de pruebas: Laboratorio México

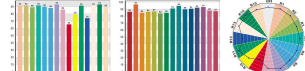
Información

Usuario : Alberto      Tiempo de medición: 09:27:39
No. Medida : MEXSON PREMIUM      Fuente de Luz: Diodos
Nota :

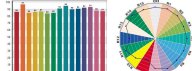
BASIC

CCT : 2841 K
x : 0.0501
y : 0.4325
Luz: 1830 lm
Longitud de onda : 630 nm

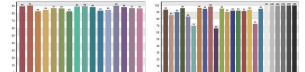
CRI: 90,28



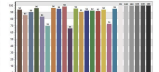
CCR: 88,17



TM30: 87,06



TLCI: 86,70



Tables for Ohmic loss, Voltage drop, and CRI-2 values.

Información

Centro de pruebas: Laboratorio México

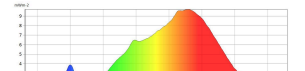
Información

Usuario : Alberto      Tiempo de medición: 09:28:57
No. Medida : MEXSON PREMIUM      Fuente de Luz: Diodos
Nota :
MEX

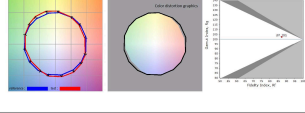
Rf 87,2

Rg 102,5

Espectro



General Color Rendition



Información

Centro de pruebas: Laboratorio México

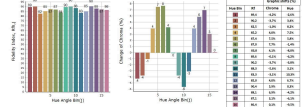
Información

Usuario : Alberto      Tiempo de medición: 09:28:57
No. Medida : MEXSON PREMIUM      Fuente de Luz: Diodos
Nota :
MEX

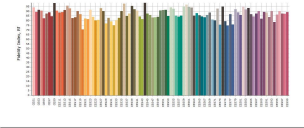
Rf 87,2

Rg 102,5

Color Rendition by Hue



Color Fidelity by Sample



Información

Centro de pruebas: Laboratorio México